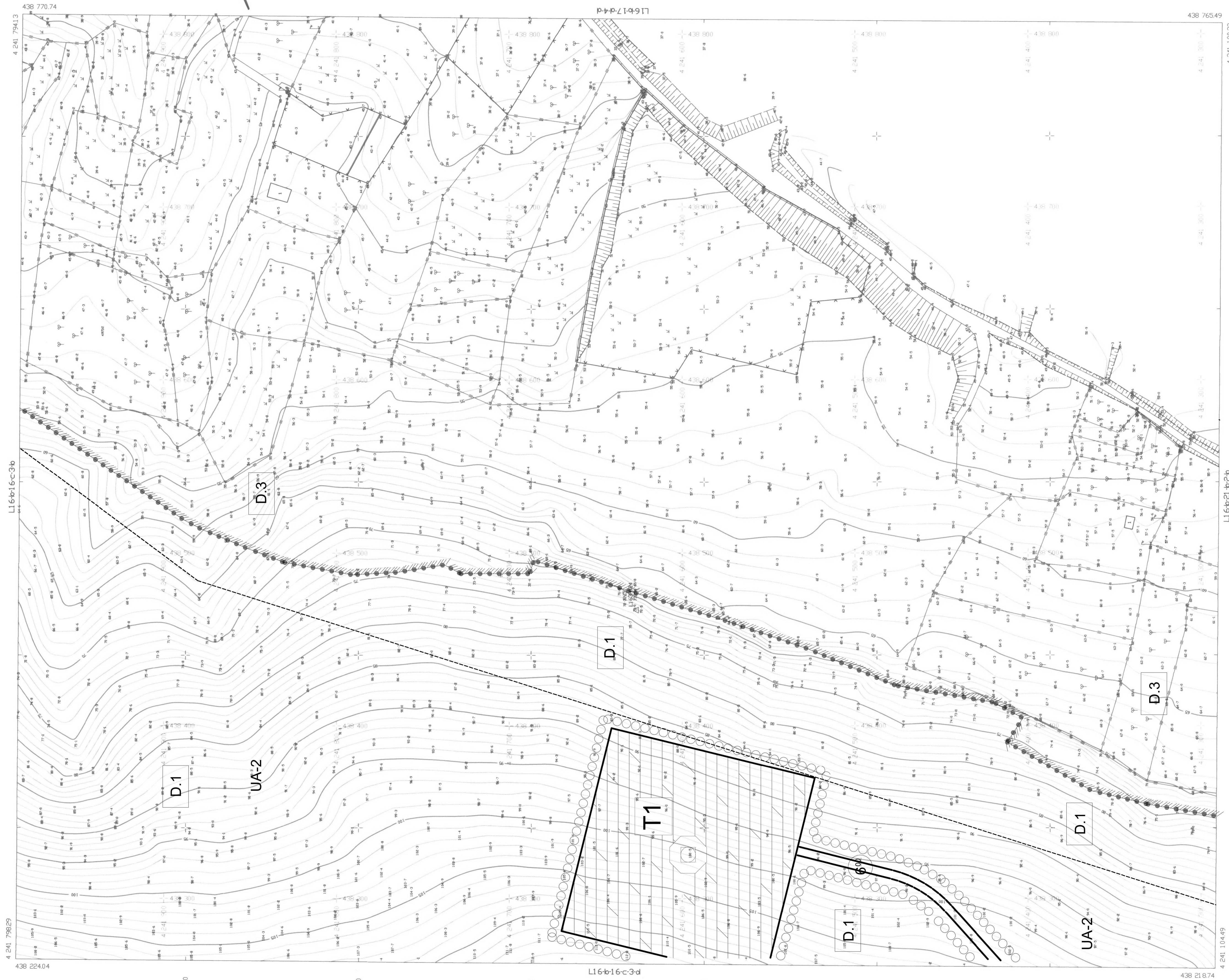


01					
06					
11	B				
12					
13					
21	22	23	24	25	

ÇEŞME (İZMİR)  
KARADAG RES.  
L16-b-16-c-3-c



4 241 798 29  
4 38 22 0 4  
4 241 794 13  
4 241 700  
4 241 600  
4 241 500  
4 241 400  
4 241 300  
4 241 200  
4 241 104 49

İTİF 96 KODUNA GÖRE  
KURULUŞUNUN İZMİR  
VE İZMİR İLİNE BAĞLI  
23 İZMİR HALI VE İZMİR  
/ 2019

*[Signature]*  
BOYUTAKLILIK

*[Signature]*  
FUSUN AYDIN  
MÜHÜR

4 38 21 8 7 4  
4 241 100 39